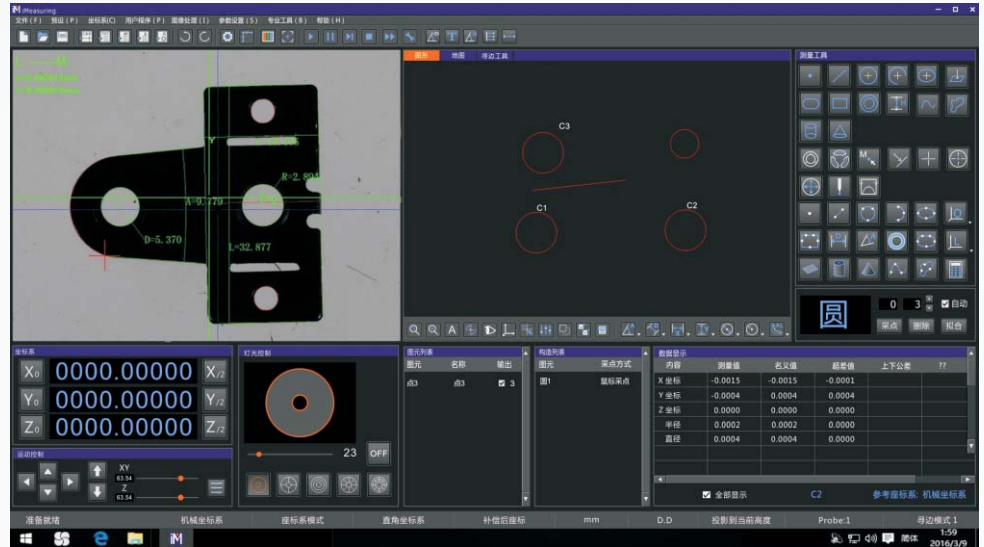


## Vision Measuring Software

# iMeasuring

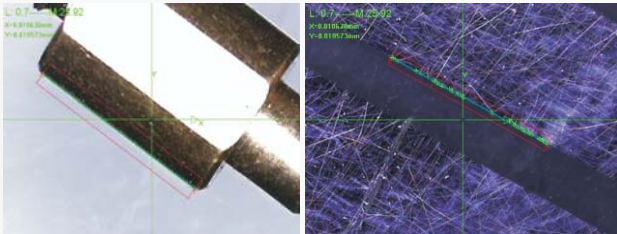
## Introduction

iMeasuring software is a professional multisensor measuring software which combined with the developers tenyears experience in the measuring and software research industry. The design principle is friendly operation, powerful function, high accuracy and stability, simple maintenance.

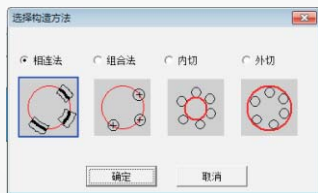


## Product Introduction

- Excellent software architecture design and fully objectoriented, to ensure the software is stable and reliable.
- Professional SPC statistical analysis software connected to measuring software, to realize that the data could automatically export to SPC database without manual operation.
- With powerful edge finder algorithm, which can help to get the edge of the shadow or dark image and ensure highly accuracy.



- It is based on different elements and supplies multiple element construction function such as Translation, rotation, extraction, combinations, parallel, vertical, mirroring, symmetry, intersection, tangent, etc.

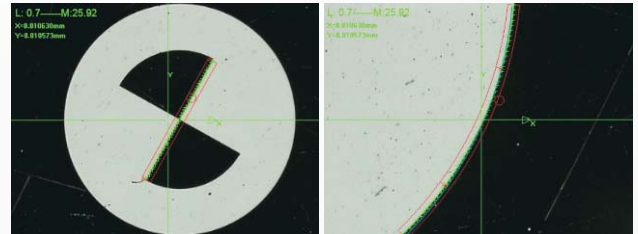


- The measuring data can auto export to TXT, WORD, EXCEL and SPC software database without the third party software conversion and manual operation.

序号	元素	内部	1	2	3	4	5
1	1 CTR2	半径	0.392	0.392	0.392	0.394	0.393
2	2 CTR2	半径	0.391	0.392	0.391	0.393	0.392
3	3 CTR2	半径	0.3921	0.3921	0.3921	0.3921	0.3921
4	4 CTR4	半径	0.3922	0.3922	0.3922	0.3922	0.3922
5	5 CTR5	半径	0.3909	0.3909	0.3909	0.3909	0.3909
6	6 CTR6	半径	0.3919	0.3919	0.3919	0.3919	0.3919
7	7 CTR7	半径	0.3911	0.3911	0.3911	0.3911	0.3911
8	8 CTR8	半径	0.3921	0.3921	0.3921	0.3921	0.3921
9	9 CTR9	半径	0.3923	0.3923	0.3923	0.3923	0.3923
10	10 CTR10	半径	0.3914	0.3914	0.3914	0.3914	0.3914
11	11 CTR11	半径	0.3907	0.3907	0.3907	0.3907	0.3907
12	12 CTR12	半径	0.3918	0.3918	0.3918	0.3918	0.3918

- The software can import "cancel" and "Recover" to make it easier and faster to operate.

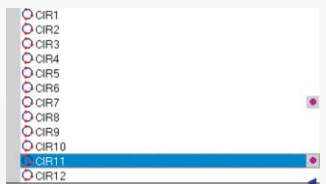
- Support with multiple language, no need to install language pack and change the software which is convenient to local customers.
- The same model of software will be permanent free to update, it can help to reduce other trouble to customer.
- The software could automatically recognize and measure line, circle, arc and other elements.



- The software can show you different intelligent processing functions such as: ultra-limit red alert, ultra-limit pause, failure measuring pause, manual measurement, skip running, forced running, etc.

CIR1			
内容	测量值	名义值	上公差
X坐标	-1.6449	-1.6449	0.0100
Y坐标	0.2627	0.2627	0.0100
半径	1.2695	1.2895	0.0100
直径	2.5391	2.5790	0.0100

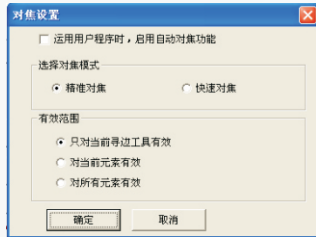
- The software has breakpoint setting function, it can be intelligent switched between manual measurement and auto measurement.



- It can easily measure flatness quickly with powerful laser measuring function, and test the small bumps, pits, V-angle and high-precision surface scanning while video and probe cannot test it.

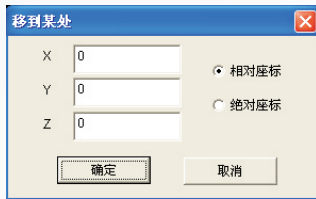
- The software can supply auxiliary light-dimmer indicated function to avoid measuring error caused by light intensity problem and improve measuring accuracy and efficiency.

- The software can supply many function such as accurate focus, quick focus, image height measurement, and the repeatability can reach to 3um(above 2x magnification).

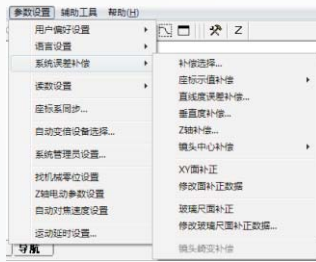


- The software supply multiple running control mode, which make it faster and convenient to position. 1. Operate handle; 2. Click middle key in the image window, long-press right key; 3. Click middle key in the drawing window;

4. Move element list window to the primitive; 5. Click the mouse in the running control window; 6. Click middle key in the scan window; 7. Click middle key in the map window; 8. Input coordinate value.



- The software supply multiple system error correction function, such as: Linear compensation, sector compensation, vertical error compensation, Z axis linear error compensation, to ensure accuracy can reach to 0.002 mm any place in the XY area.

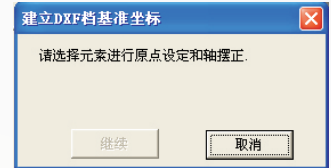


- The software can support to add simple probe based on the video measurement, to realize 3D measurement.

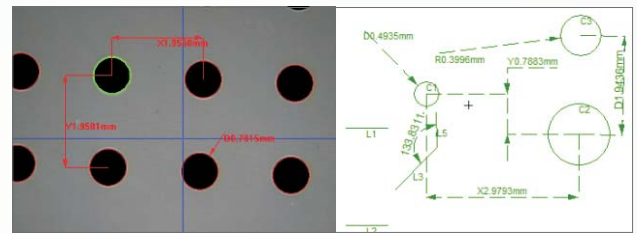


- The software can input viewport navigation, to be convenient to position and get a test place by clicking middle key.

- The software can easily and quickly import and export DXF file and set up coordinate system for auto measurement.



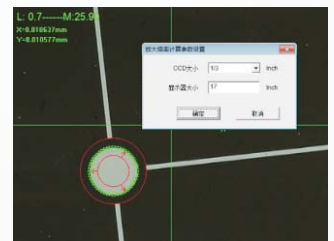
- The image window and drawing window can display the measured elements and marking 2D dimension, which get the result directly.



- The software can photograph mosaic the workpiece to get a large map, then make and measure it.



- The software can auto calculate and mark the present magnification and video magnification, and display the pixel measurement value.



## Sinowon Vision Measuring Machine Software Version Number

Version	Video Measurement	Linear Scale Signal	Illumination Control	Manual Probe Measurement	Auto Focus	Auto Stage	Auto Zoom	Auto Probe	Probe Auto Conversion	Laser Measurement	Suitable Models
IM1.0	√	X	X	X	X	X	X	X	X	X	VM100
IM1.5	X	√	X	X	X	X	X	X	X	X	VP300,VP400, PH400, PH600
IM2.0	√	√	X	X	X	X	X	X	X	X	VMM
IM2.1	√	√	√	X	X	X	X	X	X	X	IVISION/VP/PH
IM2.2	√	√	√	X	√	X	X	X	X	X	IFOUCS
IM3.1	√	√	√	√	X	X	X	X	X	X	ITOUCH
IM4.1	√	√	√	X	√	√	√	X	X	X	MVS/AutoVision
IM4.2	√	√	√	√	√	√	√	√	X	X	MVA/MVH/AutoTouch
IM5.0	√	X	√	X	X	X	X	X	X	√	AutoScan
IM6.0	√	X	√	X	X	X	X	X	X	X	IVS-30/60/80/160/240